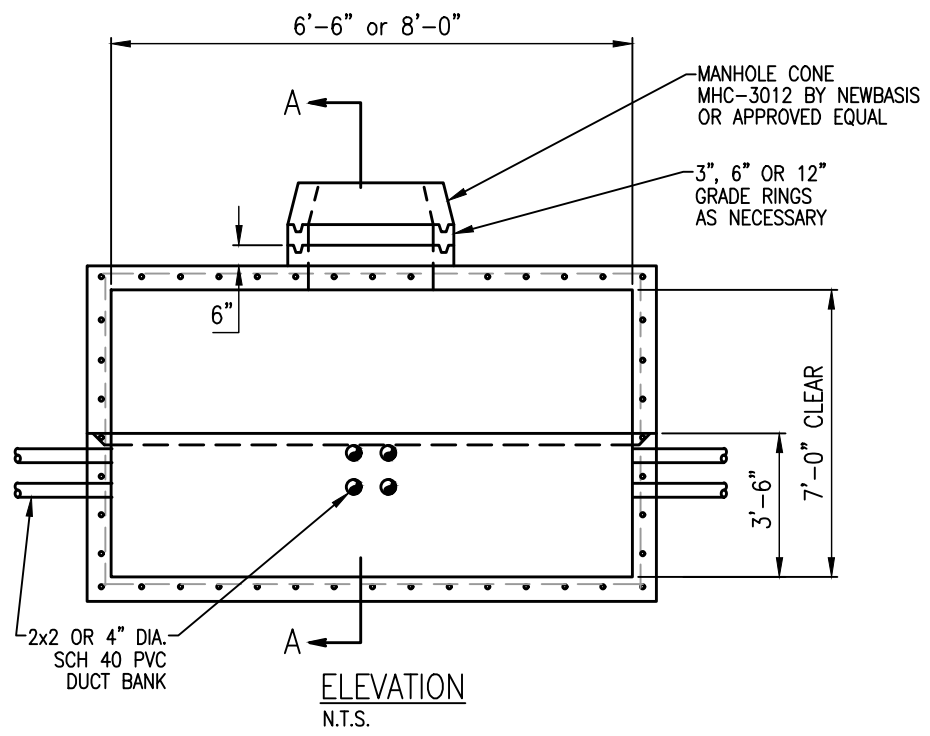
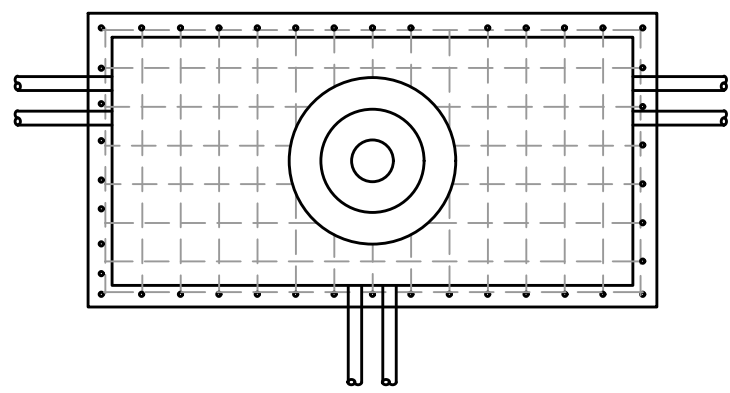


SECTION A-A
N.T.S.

* = REPRESENTS DIMENSIONS TO BE VERIFIED WITH MANUFACTURER. CONTRACTOR SHALL USE "UTILITY CONDUIT TERMINATORS" BY NEWBASIS, OR APPROVED EQUAL FOR DUCT TIES TO MANHOLES. INSTALLATION SHALL BE AS PER MANUFACTURERS RECOMMENDATIONS.



ELEVATION
N.T.S.

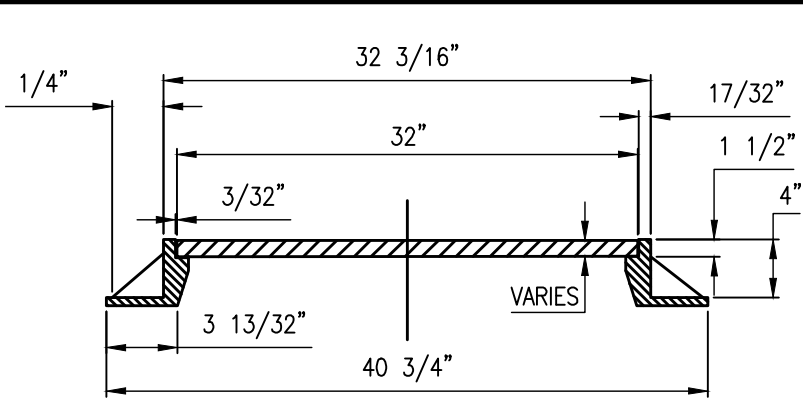


SEPTEMBER 2022



TOWN OF WESTLAKE
1500 SOLANA BOULEVARD
BLDG. 7, SUITE 7200
WESTLAKE, TEXAS 76262

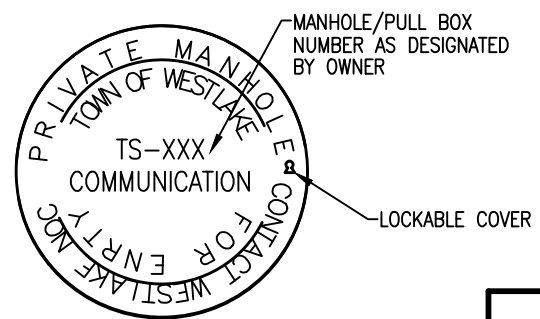
DUCTBANK
DETAILS
WDB-1



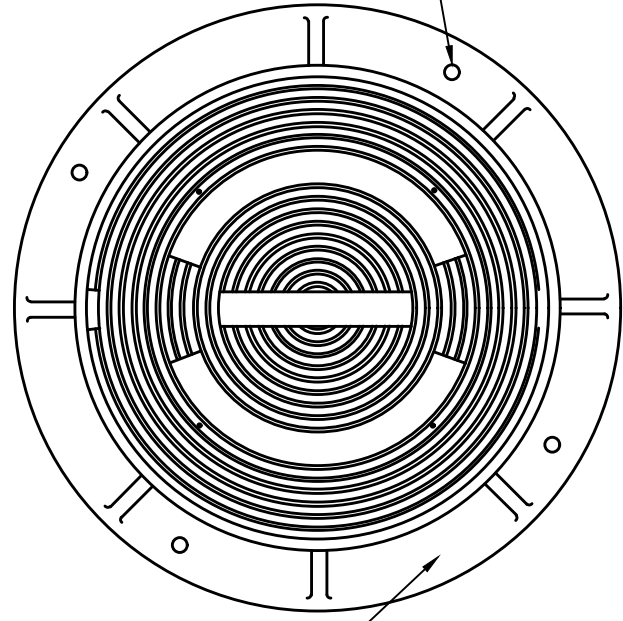
STANDARD MANHOLE FRAME & COVER
N.T.S.

NOTES:

1. THE CONTRACTOR SHALL USE HEAVY DUTY MANHOLE RING AND COVER NO. 414200 OP AS MANUFACTURED BY EAST JORDAN IRON WORKS, INC. OR APPROVED EQUAL.
2. THE MANHOLE RING SHALL BE CAST WITH A MIN. OF BOLT HOLES TO ALLOW BOLTING TO THE MANHOLE CONE AND FOR ADJUSTMENT TO FINAL GRADE.
3. THE SPACE BETWEEN THE MANHOLE CONE AND THE CONE SECTION SHALL BE FILLED WITH NON-SHRINK GROUT TO THE SATISFACTION OF THE ENGINEER.
4. THE MANHOLE COVER SHALL BE BOLTED TO THE RING WITH THE TOWN OF WESTLAKE LOCKING BOLTS TO THE SATISFACTION OF THE ENGINEER.
5. MANHOLE COVERS SHALL BE STAMPED AS PER THE DETAIL AS SHOWN HEREON AND TO THE SATISFACTION OF THE ENGINEER.



BOLT HOLE LOCATIONS TO BE COORDINATED WITH MANUFACTURED FOR ALIGNMENT WITH THE CONE RISER



MANHOLE RING AND COVER BY EAST JORDAN IRON WORKS, INC., OR APPROVED EQUAL

GENERAL NOTES:

1. THE CONTRACTOR SHALL PROVIDE A 1/8" POLY PULL STRING IN EACH DUCT BANK CONDUIT.
2. ALL STRUCTURES SHALL BE GROUNDED.
3. THE SPACES SHALL BE PLACED EVERY 10' UNLESS OTHERWISE REQUIRED BY FIELD CONDITIONS.
4. THE CONTRACTOR SHALL DEFLECT THE DUCTS WITHIN THE LAST 20' AT MANHOLES BOTH HORIZONTALLY AND VERTICALLY TO ALIGN WITH THE TERMINATIONS.
5. THE SUB-GRADE OF MECHANICALLY COMPACTED SOIL WITH 6" MECHANICALLY COMPACTED CRUSHED STONE (DENSITIES OF EACH SHALL BE A MIN. OF 95% AS PER ASTM D558).
6. THIS DESIGN IS INTENDED FOR LOW VOLTAGE TELECOMMUNICATIONS FACILITIES AND IS NOT INTENDED AS A FACILITY FOR ELECTRIC POWER.

MANHOLE NOTES:

1. ALL MANHOLES SHALL BE GROUNDED USING 10' GROUND ROD DRIVEN THROUGH THE BOTTOM OF THE MANHOLE IN THE THIN WALL KNOCKOUT PROVIDED.
2. ALL MANHOLES SHALL HAVE GALVANIZED METAL CABLE RACKS CAST INTO THE STRUCTURE WITH 10" CABLE HANGERS & GROUND CLAMPS.
3. THE CONTRACTOR SHALL ENSURE THAT THE TOP AND BOTTOM OF THE MANHOLE IS GROUNDED.
4. THE STRUCTURE DESIGN OF THE MANHOLES SHALL BE PROVIDED, WITH SHOP DRAWINGS SUBMITTED PRIOR TO CONSTRUCTION AND SHALL BE SEALED BY AN ENGINEER LICENSED TO PRACTICE IN THE STATE OF TEXAS. INSTALLATION OF ALL MANHOLES SHALL BE IN STRICT ACCORDANCE WITH THE MANUFACTURERS RECOMMENDATIONS AND IN ACCORDANCE WITH THE STRUCTURAL DESIGN.
5. THE CONTRACTORS SHALL DEFLECT THE DUCTS WITHIN THE LAST 20' FOR TIE INTO TERMINATORS AT THE MANHOLES.
6. COORDINATE WITH MANUFACTURER FOR LOCATIONS OF TERMINATOR BANKS, PULL IRONS, AND METALLIC CABLE RACKS CAST INTO MANHOLE.
7. NO MANHOLE STEPS SHALL BE REQUIRED.
8. LIFTING EYES SHALL BE PROVIDED BY THE MANUFACTURER, IF REQUIRED.
9. JOINTS SHALL BE SEALED WITH BUTYL JOINT SEALANT AND BE WATERTIGHT PER MANUFACTURER.
10. DEPTH OF MANHOLE SHALL DETERMINE NUMBER OF GRADE RINGS REQUIRED.
11. MANHOLE SHALL HAVE STANDARD TOWN OF WESTLAKE COVER.

STANDARD DUCT BANK MANHOLE

PRECAST REINFORCED
CONCRETE MANHOLE
6'-0" x 8'-0" - 84" OR
4'-0" x 6'-6" x 84"
GREENLINE BY NEWBASIS
(OR APPROVED EQUAL)

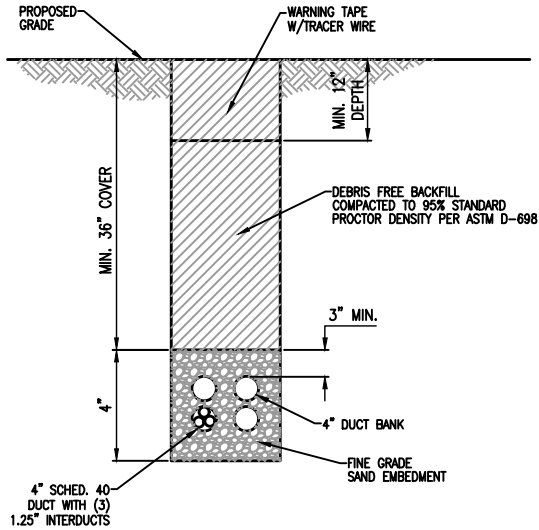
LOCKABLE ACCESS COVER
N.T.S.

SEPTEMBER 2022

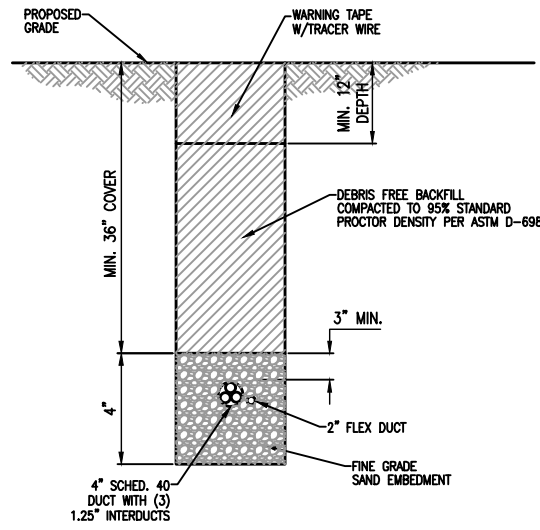


TOWN OF WESTLAKE
1500 SOLANA BOULEVARD
BLDG. 7, SUITE 7200
WESTLAKE, TEXAS 76262

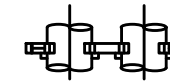
DUCTBANK
DETAILS
WDB-2



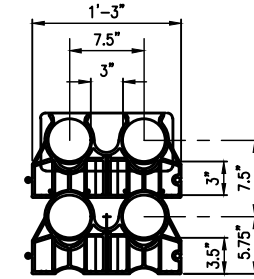
TYPICAL 4-DUCT SECTION
N.T.S.



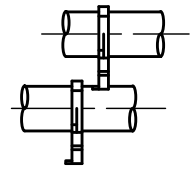
FLEX DUCT TYPICAL SECTION
N.T.S.



TOP VIEW
(TYPICAL)



FRONT VIEW
(TYPICAL)

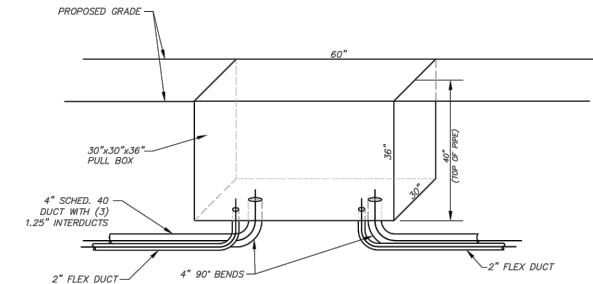


SIDE VIEW
(TYPICAL)

SPACERS
N.T.S.

GENERAL NOTES:

1. THE CONTRACTOR SHALL PROVIDE A 1/8" POLY PULL STRING IN EACH DUCT BANK CONDUIT.
2. PULL BOXES TO BE INSTALLED AT A MAXIMUM SPACING OF 500 FEET.
3. ALL STRUCTURES SHALL BE GROUNDED.
4. THE CONTRACTOR SHALL REFER TO THE ENGINEERING PLANS TO VERIFY HORIZONTAL AND VERTICAL LOCATION OF ALL EXISTING AND PROPOSED UNDERGROUND FACILITIES AND PROPOSED FINAL GRADES.
5. THE CONTRACTOR SHALL DEFLECT THE DUCTS WITHIN THE LAST 20' AT ALL PULL BOXES BOTH HORIZONTALLY AND VERTICALLY TO ALIGN WITH THE TERMINATORS INTO THE PULL BOXES.
6. EROSION CONTROL MEASURES AND MAINTENANCE OF THE SWPPP MANUAL WILL BE PROVIDED FOR AND MAINTAINED BY THE THIRD PARTY CONTRACTED DIRECTLY TO THE DEVELOPER. THE CONTRACTOR SHALL BE REQUIRED TO PROTECT ALL EROSION CONTROL MEASURES ON SITE, BE FAMILIAR WITH THE SWPPP PLAN AND NOTIFY THE DEVELOPER OF ANY DAMAGE TO THE INSTALLED CONTROL MEASURES WITH WITNESSED OR CAUSED BY THE CONTRACTOR OR HIS SUB-CONTRACTORS.
7. THIS DESIGN IS INTENDED FOR LOW VOLTAGE TELECOMMUNICATIONS FACILITIES AND IS NOT INTENDED FOR A FACILITY FOR ELECTRIC POWER.



TYPICAL PULL BOX
SINGLE CONDUIT
NTS

SEPTEMBER 2022



TOWN OF WESTLAKE
1500 SOLANA BOULEVARD
BLDG. 7, SUITE 7200
WESTLAKE, TEXAS 76262

DUCTBANK
DETAILS
WDB-3