

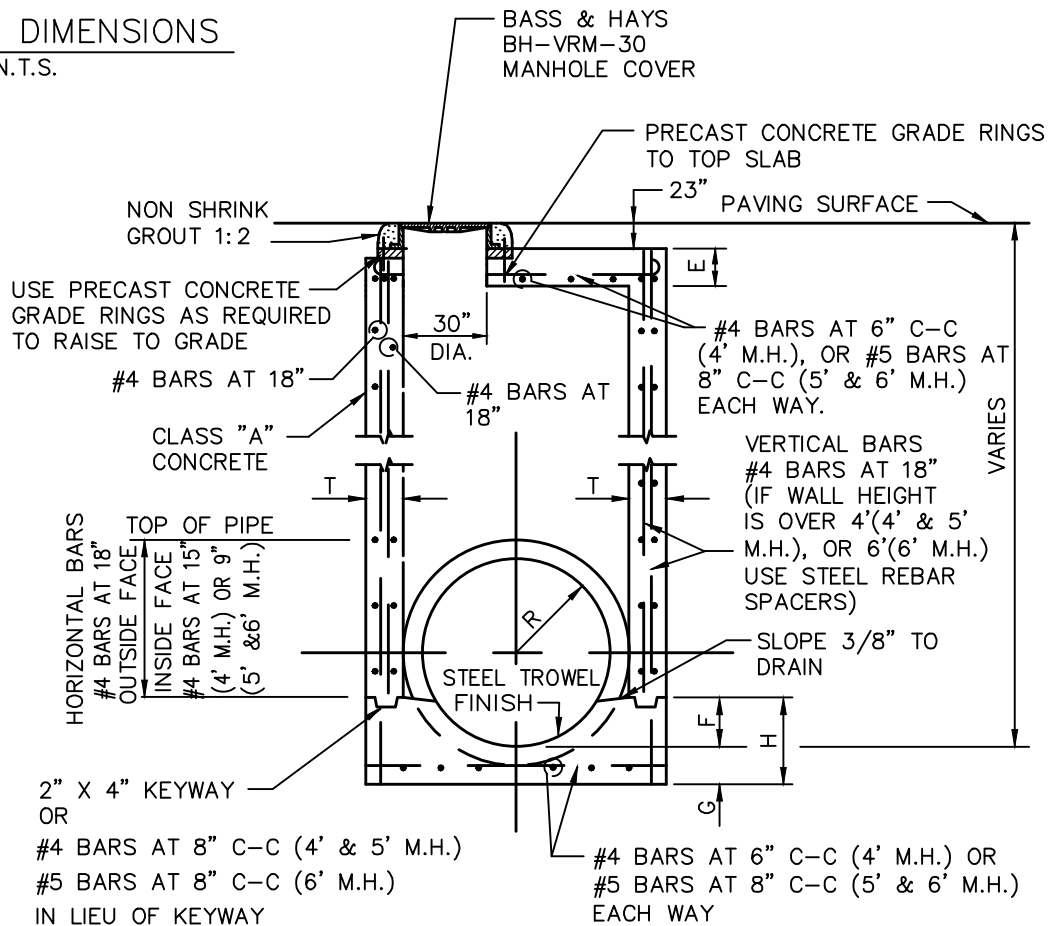
PLAN

N.T.S.

M.H. SIZE(W)	V	T	E	F	G	H
4'	5'-4"	8"	6"	9"	6"	1'-3"
5'	6'-4"	8"	6"	12"	8"	1'-8"
6'	7'-6"	9"	9"	16"	10"	2'-2"

TABLE OF DIMENSIONS

N.T.S.



SECTION B-B

N.T.S.

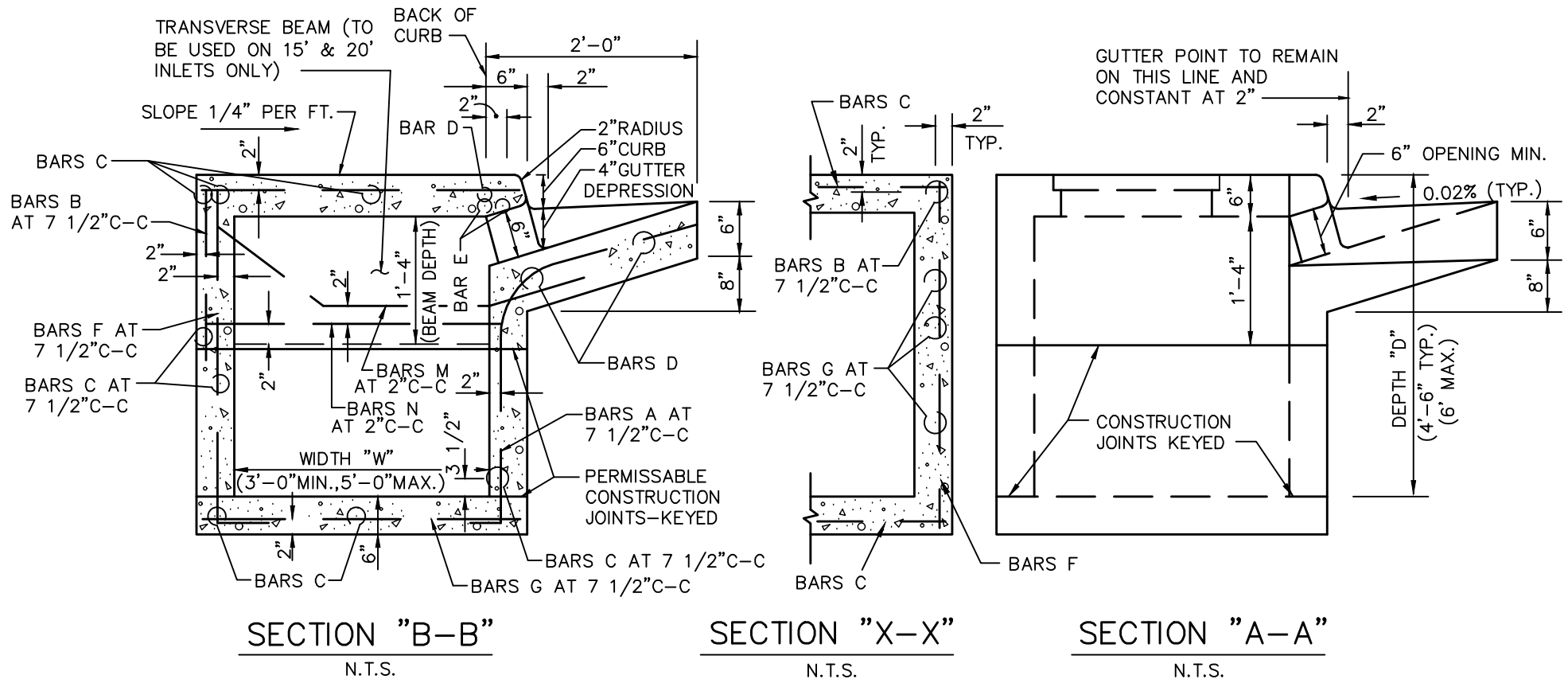
SEPTEMBER 2022



TOWN OF WESTLAKE  
1500 SOLANA BOULEVARD  
BLDG. 7, SUITE 7200  
WESTLAKE, TEXAS 76262

STORM WATER  
MANHOLE  
WSD-01





GENERAL NOTES:

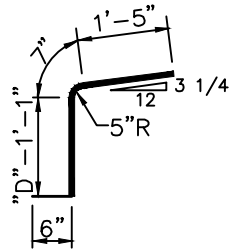
1. ALL CONCRETE SHALL BE CLASS "A" CONCRETE.
2. REINFORCING BARS SHALL BE STANDARD GRADE STEEL, DEFORMED REINFORCING BARS OF A DIAMETER AND LENGTH AS SHOWN.
3. CHAMFER ALL EXPOSED CORNERS 3/4" EXCEPT WHERE OTHERWISE NOTED.
4. DIMENSIONS RELATING TO REINFORCING STEEL ARE TO CENTERS OF BARS.
5. FIELD CUT AND BEND BARS AS NECESSARY TO ACCOMMODATE STORM SEWER PIPE.
6. RING AND COVER SHALL BE APPROVED BY THE TOWN OF WESTLAKE AND INSTALLED BY THE CONTRACTOR.

SEPTEMBER 2022

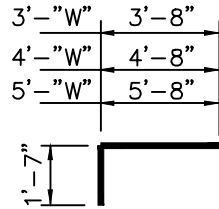


TOWN OF WESTLAKE  
1500 SOLANA BOULEVARD  
BLDG. 7, SUITE 7200  
WESTLAKE, TEXAS 76262

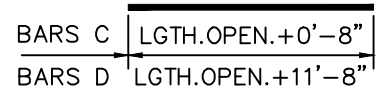
CURB INLET  
WSD-03



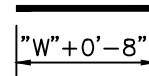
#4 BARS A  
N.T.S.



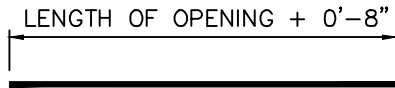
#4 BARS B  
N.T.S.



#4 BARS C & D  
N.T.S.



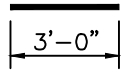
#4 BARS G  
N.T.S.



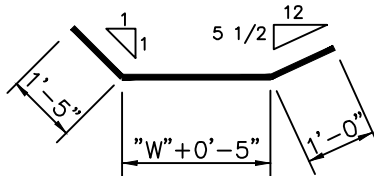
#4 BARS E  
N.T.S.



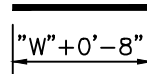
#4 BARS F  
N.T.S.



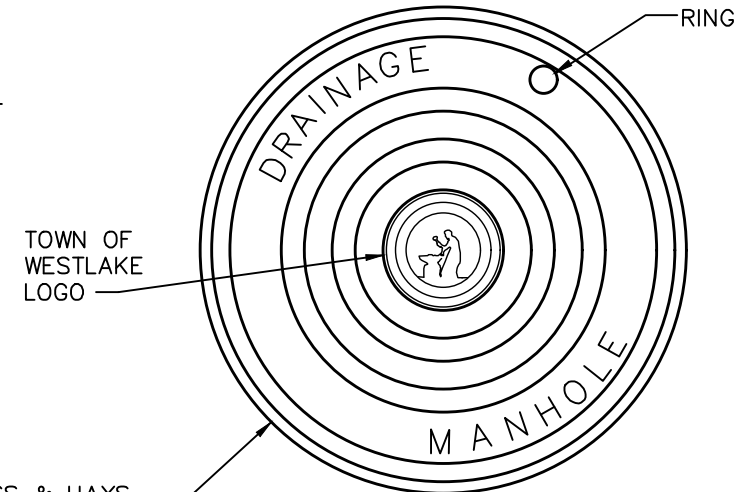
#4 BARS J  
N.T.S.



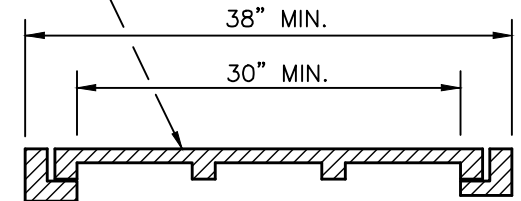
#3 BARS M  
N.T.S.



#5 BARS N  
N.T.S.



BASS & HAYS  
BH-VRM-30  
MANHOLE COVER



CAST IRON  
FRAME AND COVER  
N.T.S.

SEPTEMBER 2022



TOWN OF WESTLAKE  
1500 SOLANA BOULEVARD  
BLDG. 7, SUITE 7200  
WESTLAKE, TEXAS 76262

CURB INLET  
WSD-04

BILL OF REINFORCING STEEL

DEPTH "D"	ALL WIDTHS AND LENGTHS				OPENING LENGTH "L" = 5ft						OPENING LENGTH "L" = 10ft						OPENING LENGTH "L" = 15 ft						OPENING LENGTH "L" = 20 ft									
					Widths "W"						Widths "W"						Widths "W"						Widths "W"									
					3ft	4ft	5ft				3ft	4ft	5ft				3ft	4ft	5ft				3ft	4ft	5ft							
	BARS	BARS	BARS	BARS	BARS	BARS	BARS	BARS	BARS	BARS	BARS	BARS	BARS	BARS	BARS	BARS	BARS	BARS	BARS	BARS	BARS	BARS	BARS	BARS	BARS	BARS	BARS	BARS	BARS	BARS	BARS	BARS
C	D	E	J	F	F	F	A	B	G	F	F	F	A	B	G	F	F	F	A	B	G	M	N	F	F	F	A	B	G	M	N	
3'-6"	17	3	2	4	20	24	28	10	10	20	28	32	36	18	18	28	36	40	44	26	26	36	2	2	44	48	52	34	34	44	2	2
3'-9"	18	"	"	"	"	"	"	"	"	20	"	"	"	"	"	28	"	"	"	"	"	36	"	"	"	"	"	"	"	44	"	"
4'-0"	19	"	"	"	"	"	"	"	"	24	"	"	"	"	"	32	"	"	"	"	"	40	"	"	"	"	"	"	"	48	"	"
4'-3"	19	"	"	"	"	"	"	"	"	24	"	"	"	"	"	32	"	"	"	"	"	40	"	"	"	"	"	"	"	48	"	"
4'-6"	21	"	"	"	"	"	"	"	"	26	"	"	"	"	"	34	"	"	"	"	"	42	"	"	"	"	"	"	"	50	"	"
4'-9"	21	"	"	"	"	"	"	"	"	26	"	"	"	"	"	34	"	"	"	"	"	42	"	"	"	"	"	"	"	50	"	"
5'-0"	21	"	"	"	"	"	"	"	"	26	"	"	"	"	"	34	"	"	"	"	"	42	"	"	"	"	"	"	"	50	"	"
5'-3"	23	"	"	"	"	"	"	"	"	28	"	"	"	"	"	36	"	"	"	"	"	44	"	"	"	"	"	"	"	52	"	"
5'-6"	23	"	"	"	"	"	"	"	"	28	"	"	"	"	"	36	"	"	"	"	"	44	"	"	"	"	"	"	"	52	"	"
5'-9"	25	"	"	"	"	"	"	"	"	30	"	"	"	"	"	38	"	"	"	"	"	46	"	"	"	"	"	"	"	54	"	"
6'-0"	25	"	"	"	"	"	"	"	"	30	"	"	"	"	"	38	"	"	"	"	"	46	"	"	"	"	"	"	"	54	"	"
6'-3"	26	"	"	"	"	"	"	"	"	30	"	"	"	"	"	38	"	"	"	"	"	46	"	"	"	"	"	"	"	54	"	"
6'-6"	27	"	"	"	"	"	"	"	"	32	"	"	"	"	"	40	"	"	"	"	"	48	"	"	"	"	"	"	"	56	"	"
6'-9"	27	"	"	"	"	"	"	"	"	32	"	"	"	"	"	40	"	"	"	"	"	48	"	"	"	"	"	"	"	56	"	"
7'-0"	29	"	"	"	"	"	"	"	"	34	"	"	"	"	"	42	"	"	"	"	"	50	"	"	"	"	"	"	"	58	"	"
7'-3"	29	"	"	"	"	"	"	"	"	34	"	"	"	"	"	42	"	"	"	"	"	50	"	"	"	"	"	"	"	58	"	"
7'-6"	30	"	"	"	"	"	"	"	"	34	"	"	"	"	"	42	"	"	"	"	"	50	"	"	"	"	"	"	"	58	"	"
7'-9"	31	"	"	"	"	"	"	"	"	36	"	"	"	"	"	44	"	"	"	"	"	52	"	"	"	"	"	"	"	60	"	"
8'-0"	31	"	"	"	"	"	"	"	"	36	"	"	"	"	"	44	"	"	"	"	"	52	"	"	"	"	"	"	"	60	"	"
8'-3"	32	"	"	"	"	"	"	"	"	36	"	"	"	"	"	44	"	"	"	"	"	52	"	"	"	"	"	"	"	60	"	"
8'-6"	33	"	"	"	"	"	"	"	"	38	"	"	"	"	"	46	"	"	"	"	"	54	"	"	"	"	"	"	"	62	"	"
8'-9"	34	"	"	"	"	"	"	"	"	38	"	"	"	"	"	46	"	"	"	"	"	54	"	"	"	"	"	"	"	62	"	"
9'-0"	35	"	"	"	"	"	"	"	"	40	"	"	"	"	"	48	"	"	"	"	"	56	"	"	"	"	"	"	"	64	"	"
9'-3"	36	"	"	"	"	"	"	"	"	40	"	"	"	"	"	48	"	"	"	"	"	56	"	"	"	"	"	"	"	64	"	"
9'-6"	37	"	"	"	"	"	"	"	"	42	"	"	"	"	"	50	"	"	"	"	"	58	"	"	"	"	"	"	"	66	"	"
10'-0"	38	"	"	"	"	"	"	"	"	42	"	"	"	"	"	50	"	"	"	"	"	58	"	"	"	"	"	"	"	66	"	"

NOTE:

FOR CONVENIENCE, DEPTHS OF INLETS SHOWN IN ABOVE TABLES ARE IN INCREMENTS OF 3 INCHES BUT ANY DEPTHS OTHER THAN THOSE SHOWN ABOVE MAY BE USED WHEREVER DEEMED NECESSARY. QUANTITIES FOR OTHER DEPTHS FALLING WITHIN THE LIMITS OF THE TABLE MAY BE FOUND BY INTERPOLATION.

SEPTEMBER 2022



TOWN OF WESTLAKE  
1500 SOLANA BOULEVARD  
BLDG. 7, SUITE 7200  
WESTLAKE, TEXAS 76262

CURB INLET  
WSD-05

SUMMARY OF QUANTITIES FOR CURB INLETS

DEPTH "D"	5'-0" OPENING						10'-0" OPENING						15'-0" OPENING						20'-0" OPENING					
	WIDTH 3'-0"		WIDTH 4'-0"		WIDTH 5'-0"		WIDTH 3'-0"		WIDTH 4'-0"		WIDTH 5'-0"		WIDTH 3'-0"		WIDTH 4'-0"		WIDTH 5'-0"		WIDTH 3'-0"		WIDTH 4'-0"		WIDTH 5'-0"	
	CONC C.Y.	STEEL LBS.	CONC C.Y.	STEEL LBS.	CONC C.Y.	STEEL LBS.	CONC C.Y.	STEEL LBS.	CONC C.Y.	STEEL LBS.	CONC C.Y.	STEEL LBS.	CONC C.Y.	STEEL LBS.	CONC C.Y.	STEEL LBS.	CONC C.Y.	STEEL LBS.	CONC C.Y.	STEEL LBS.	CONC C.Y.	STEEL LBS.	CONC C.Y.	STEEL LBS.
3'-6"	2.62	306	2.95	332	3.28	373	4.12	479	4.64	521	5.20	564	5.69	667	6.40	721	7.10	775	7.20	846	8.11	909	9.03	976
3'-9"	2.70	309	3.04	341	3.39	373	4.25	494	4.78	536	5.34	579	5.87	687	6.58	741	7.30	796	7.42	874	8.34	937	9.27	1010
4'-0"	2.78	328	3.14	364	3.49	399	4.38	518	4.92	565	5.49	610	6.05	718	6.77	776	7.49	835	7.64	909	8.58	976	9.51	1046
4'-3"	2.87	334	3.23	370	3.59	406	4.51	526	5.06	573	5.64	619	6.22	729	6.95	787	7.69	847	7.87	922	8.81	990	9.75	1061
4'-6"	2.95	356	3.32	394	3.69	431	4.64	558	5.20	607	5.79	656	6.40	770	7.14	830	7.88	891	8.09	973	9.04	1043	9.99	1115
4'-9"	3.03	361	3.41	410	3.79	438	4.77	566	5.34	616	5.94	665	6.57	780	7.32	841	8.07	903	8.31	986	9.27	1056	10.23	1129
5'-0"	3.12	367	3.51	416	3.90	445	4.90	574	5.47	624	6.09	674	6.75	791	7.51	853	8.27	915	8.53	999	9.50	1070	10.47	1144
5'-3"	3.20	383	3.60	424	4.00	465	5.03	600	5.61	652	6.23	704	6.93	827	7.69	890	8.46	955	8.76	1044	9.73	1118	10.71	1194
5'-6"	3.28	389	3.69	430	4.10	472	5.16	608	5.75	661	6.38	713	7.11	837	7.88	901	8.66	967	8.98	1057	9.97	1131	10.95	1208
5'-9"	3.37	405	3.78	451	4.20	495	5.29	635	5.89	690	6.53	744	7.28	874	8.07	940	8.85	1007	9.20	1102	10.20	1178	11.19	1258
6'-0"	3.45	415	3.88	460	4.30	504	5.42	646	6.03	702	6.68	757	7.45	888	8.25	954	9.05	1022	9.42	1119	10.43	1196	11.43	1276
6'-3"	3.53	425	3.97	470	4.41	515	5.55	661	6.17	718	6.83	773	7.63	908	8.44	975	9.24	1044	9.64	1147	10.66	1223	11.67	1305
6'-6"	3.62	437	4.06	486	4.51	532	5.68	681	6.31	739	6.97	797	7.81	935	8.62	1005	9.43	1057	9.87	1178	10.89	1258	11.92	1340
6'-9"	3.70	441	4.15	490	4.61	537	5.81	688	6.45	747	7.12	806	7.98	945	8.81	1015	9.63	1066	10.09	1191	11.12	1272	12.15	1355
7'-0"	3.78	460	4.25	510	4.71	560	5.94	716	6.59	777	7.27	837	8.16	981	8.99	1053	9.82	1126	10.31	1237	11.35	1319	12.40	1404
7'-3"	3.86	465	4.34	516	4.81	567	6.07	724	6.72	785	7.42	846	8.33	992	9.18	1065	10.02	1138	10.53	1249	11.59	1333	12.64	1418
7'-6"	3.95	477	4.43	529	4.91	570	6.20	742	6.86	804	7.57	866	8.51	1016	9.36	1089	10.21	1163	10.75	1290	11.82	1365	12.88	1451
7'-9"	4.03	491	4.53	544	5.02	597	6.33	762	7.00	826	7.71	890	8.67	1040	9.55	1116	10.41	1193	10.98	1313	12.05	1399	13.12	1498
8'-0"	4.12	496	4.62	550	5.12	604	6.46	770	7.14	834	7.86	899	8.86	1051	9.73	1129	10.60	1205	11.20	1325	12.28	1412	13.36	1510
8'-3"	4.20	504	4.71	559	5.22	613	6.59	784	7.28	849	8.01	915	9.04	1069	9.92	1149	10.80	1228	11.42	1353	12.51	1440	13.60	1529
8'-6"	4.28	519	4.80	576	5.32	632	6.71	804	7.42	871	8.16	938	9.21	1107	10.10	1176	10.99	1257	11.64	1385	12.74	1474	13.84	1565
8'-9"	4.37	528	4.90	586	5.42	643	6.84	819	7.56	886	8.31	954	9.39	1119	10.29	1199	11.18	1280	11.87	1410	12.97	1500	14.08	1592
9'-0"	4.45	545	4.99	605	5.53	664	6.97	842	7.70	912	8.46	982	9.56	1148	10.47	1231	11.38	1313	12.09	1447	13.21	1539	14.32	1631
9'-3"	4.53	554	5.08	614	5.63	674	7.10	858	7.84	929	8.60	999	9.74	1169	10.66	1252	11.57	1335	12.31	1474	13.44	1563	14.56	1660
9'-6"	4.62	568	5.17	630	5.73	692	7.23	878	7.97	950	8.75	1022	9.92	1195	10.84	1280	11.77	1365	12.53	1505	13.67	1600	14.80	1696
10'-0"	4.78	582	5.36	645	5.93	708	7.49	900	8.11	974	9.05	1048	10.27	1227	11.21	1312	12.16	1399	12.98	1546	14.13	1642	15.29	1739

**NOTE:**

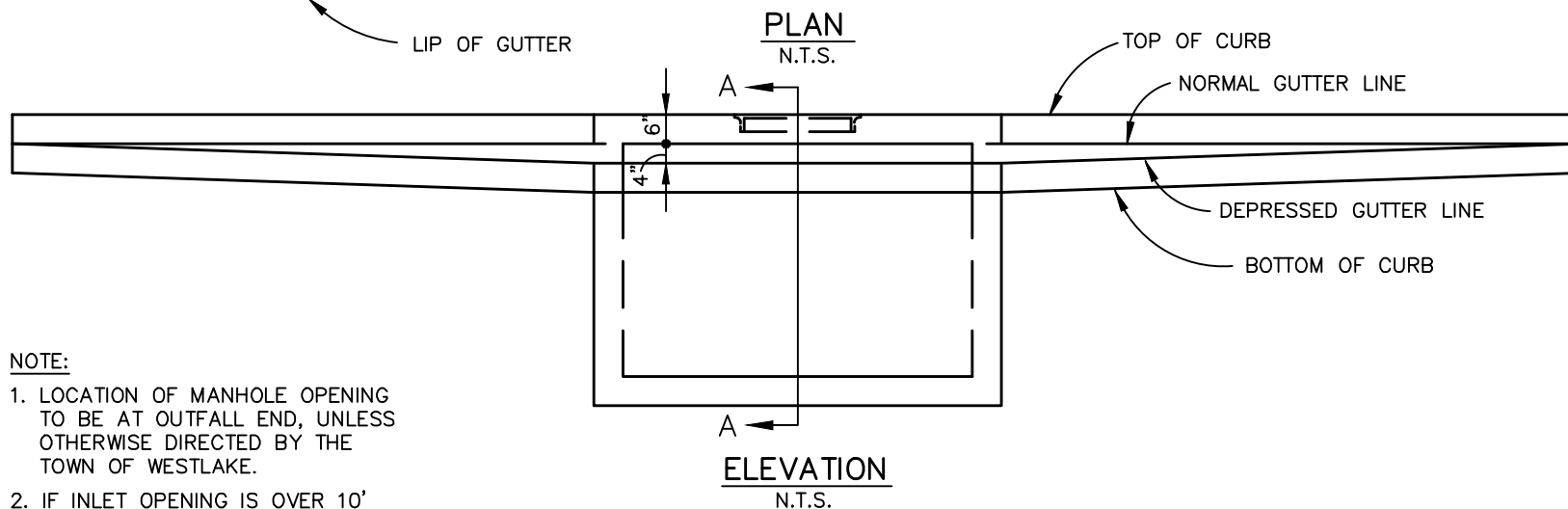
FOR CONVENIENCE, DEPTHS OF INLETS SHOWN IN ABOVE TABLES ARE IN INCREMENTS OF 3 INCHES BUT ANY DEPTHS OTHER THAN THOSE SHOWN ABOVE MAY BE USED WHEREVER DEEMED NECESSARY. QUANTITIES FOR OTHER DEPTHS FALLING WITHIN THE LIMITS OF THE TABLE MAY BE FOUND BY INTERPOLATION.

SEPTEMBER 2022



TOWN OF WESTLAKE  
1500 SOLANA BOULEVARD  
BLDG. 7, SUITE 7200  
WESTLAKE, TEXAS 76262

CURB INLET  
WSD-06

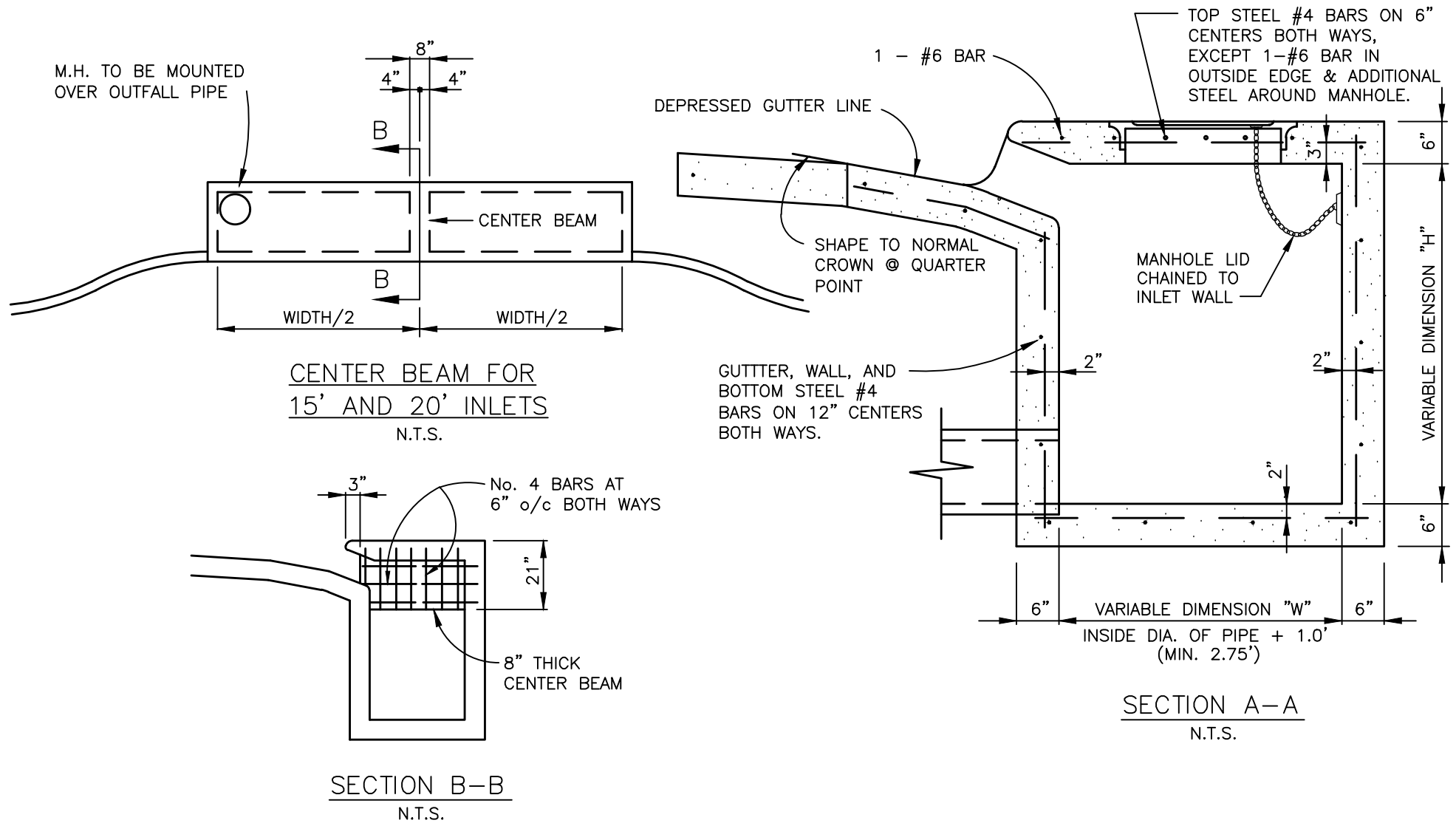


ELEVATION  
N.T.S.

1. LOCATION OF MANHOLE OPENING TO BE AT OUTFALL END, UNLESS OTHERWISE DIRECTED BY THE TOWN OF WESTLAKE.
2. IF INLET OPENING IS OVER 10' WIDTH, THEN THERE SHALL BE A MANHOLE OPENING AT EACH END OF INLET.



CURB INLET  
RECESSED  
WSD-07



SEPTEMBER 2022



TOWN OF WESTLAKE  
1500 SOLANA BOULEVARD  
BLDG. 7, SUITE 7200  
WESTLAKE, TEXAS 76262

CURB INLET  
RECESSED  
WSD-08





CURB INLET  
RECESSED  
WSD-09

**GENERAL NOTES:**

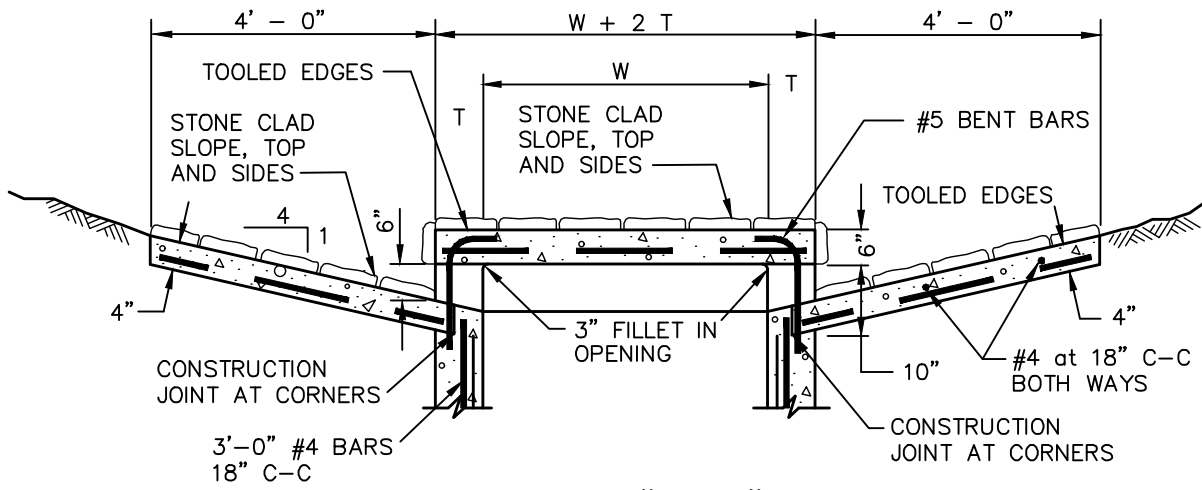
1. IN GENERAL REINFORCING STEEL SHALL BE #4 BARS ON 12" CENTERS BOTH WAYS FOR GUTTER, BOTTOM SLAB ENDS, FRONT AND BACK WALLS, AND #4 BARS ON 6" CENTERS BOTH WAYS FOR TOP SLAB. AN ADDITIONAL #6 BAR SHALL BE PLACED IN THE FRONT EDGE OF THE TOP SLAB IN THE INLETS AND ADDITIONAL REINFORCING STEEL SHALL BE PLACED AROUND MANHOLES AS SHOWN.
2. ALL REINFORCING STEEL SHALL BE GRADE 60.
3. ALL CONCRETE SHALL BE CLASS "A". ALL EXPOSED CORNERS SHALL BE CHAMFERED 3/4".
4. ALL REINFORCING STEEL SHALL HAVE A MINIMUM COVER OF 2" TO THE CENTERS OF THE BARS.
5. 10'-0" OF EXISTING CURB AND GUTTER UPSTREAM AND 10'-0" OF EXISTING CURB AND GUTTER DOWNSTREAM SHALL BE REMOVED AND REPOURED INTEGRALLY WITH EACH INLET.
6. ALL BACK FILLING SHALL BE PERFORMED BY MECHANICAL TAMPING TO 90% STANDARD PROCTOR DENSITY.

SEPTEMBER 2022

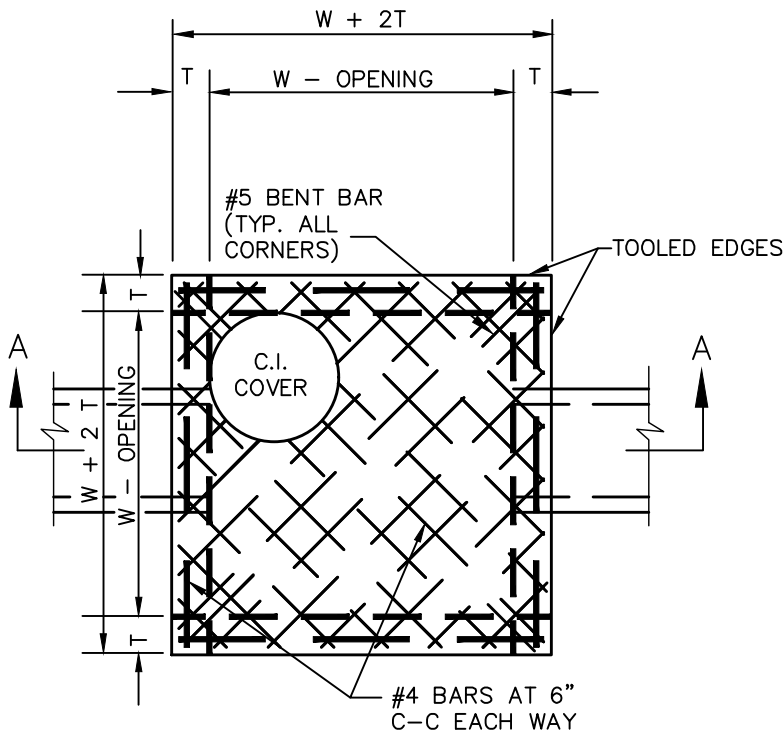


TOWN OF WESTLAKE  
1500 SOLANA BOULEVARD  
BLDG. 7, SUITE 7200  
WESTLAKE, TEXAS 76262

CURB INLET  
RECESSED  
WSD-10



SECTION "A-A"  
N.T.S.



PLAN OF TOP SLAB  
N.T.S.

INLET SIZE	T	W
2' SQUARE	7"	2'-0"
4' SQUARE	7"	4'-0"
5' SQUARE	8"	5'-0"
6' SQUARE	9"	6'-0"

NOTES:

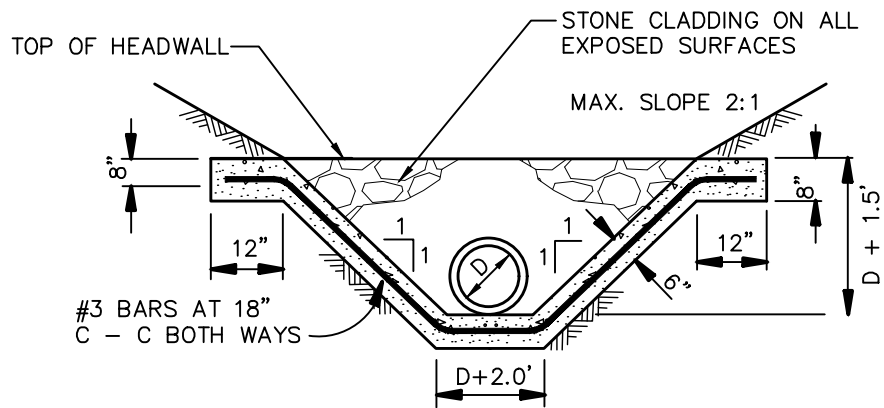
1. MATERIAL AND WORKMANSHIP SHALL CONFORM WITH THE REQUIREMENTS OF NCTCOG STANDARD SPECIFICATIONS FOR STANDARD CONCRETE MANHOLES.
2. LAYERS OF REINFORCING STEEL NEAREST THE INTERIOR AND EXTERIOR SURFACES SHALL HAVE A COVER OF 2" TO THE CENTER OF BARS, UNLESS OTHERWISE NOTED. MINIMUM CLASS "A" CONCRETE.
3. FOR DETAILS OF REINFORCING OF LOWER PORTIONS OF INLET SEE APPROPRIATE SQUARE MANHOLE DETAILS.
4. DEPTH OF DROP INLET FROM FINISHED GRADE TO FLOW LINE OF INLET IS VARIABLE. APPROXIMATE DEPTH WILL BE SHOWN ON PLANS AT LOCATION OF INLET.
5. ALL STANDARD DROP INLETS SHALL HAVE ONE OPENING ON EACH SIDE UNLESS OTHERWISE SHOWN ON PLANS.
6. DECK MAY BE REINFORCED SAME AS 4' SQUARE MANHOLE.
7. ALL EXPOSED CONCRETE SHALL BE FACED WITH STONE (COLOR TO BE DETERMINED BY THE TOWN OF WESTLAKE

SEPTEMBER 2022

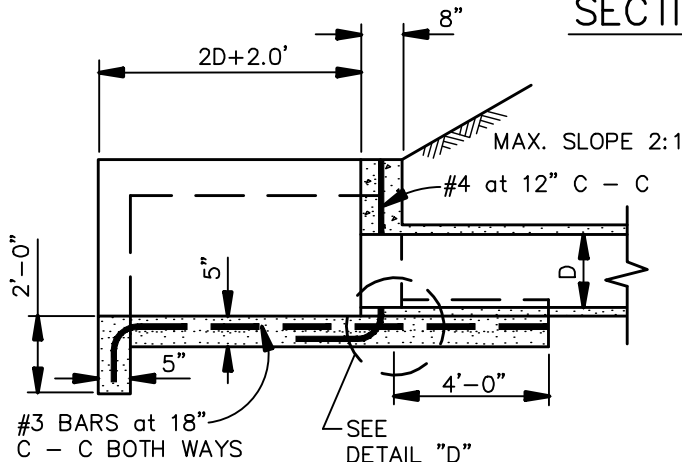


TOWN OF WESTLAKE  
1500 SOLANA BOULEVARD  
BLDG. 7, SUITE 7200  
WESTLAKE, TEXAS 76262

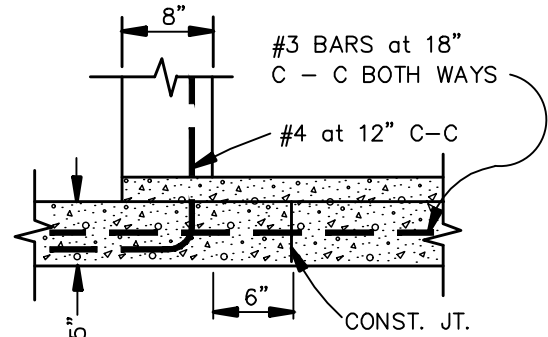
DROP INLET  
WSD-11



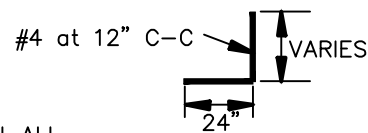
SECTION "B-B"  
N.T.S.



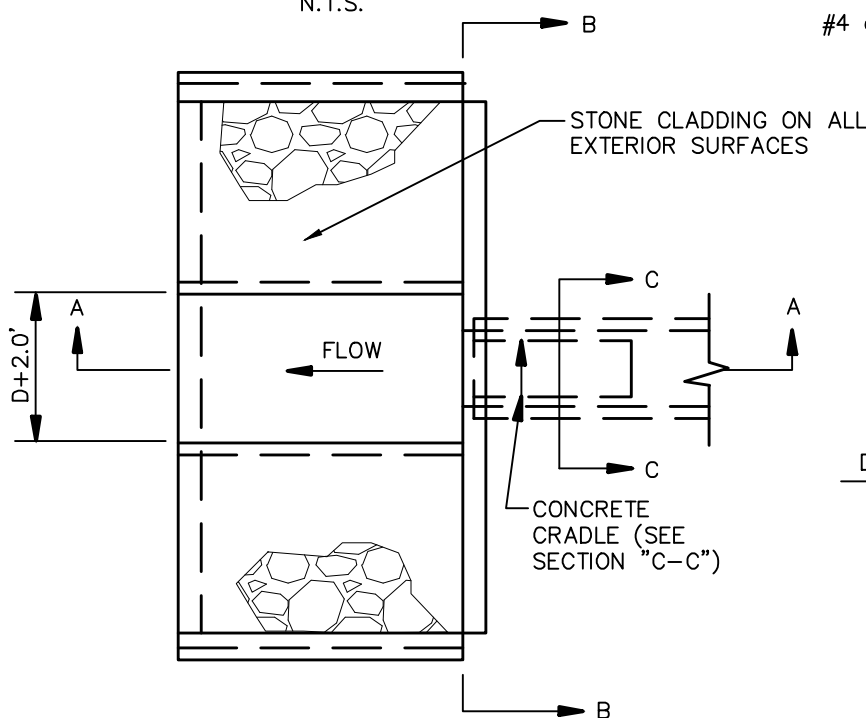
SECTION "A-A"  
N.T.S.



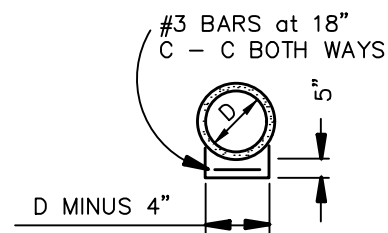
DETAIL "D"  
N.T.S.



BAR DETAIL  
N.T.S.



PLAN  
N.T.S.



SECTION "C-C"  
N.T.S.

NOTES:

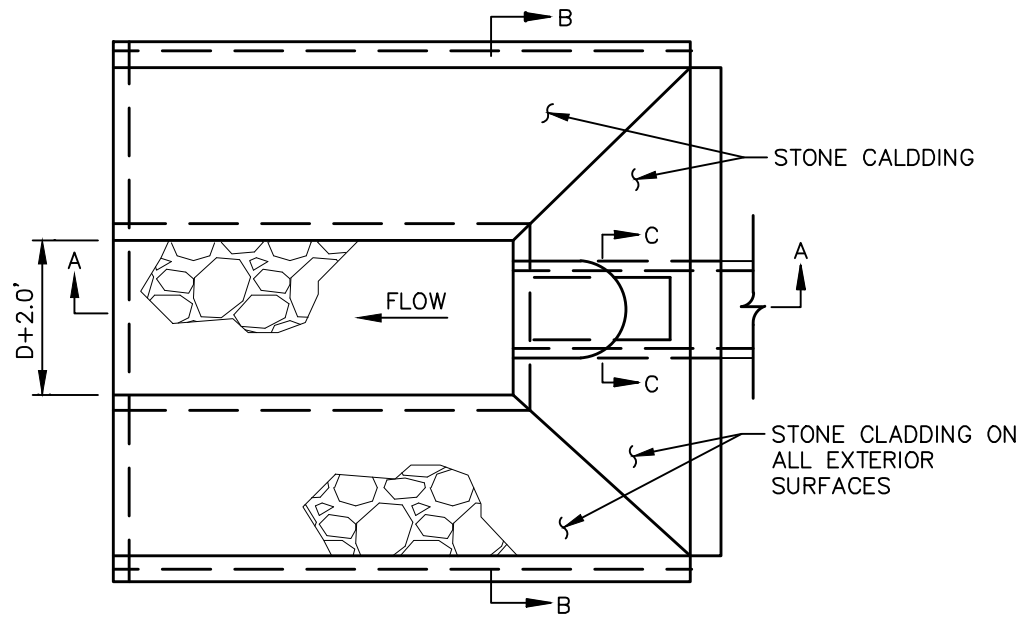
1. CONCRETE SHALL BE CLASS "A"
2. ALL EXPOSED CONCRETE SHALL BE FACED WITH STONE (COLOR TO BE DETERMINED BY THE TOWN OF WESTLAKE)

SEPTEMBER 2022



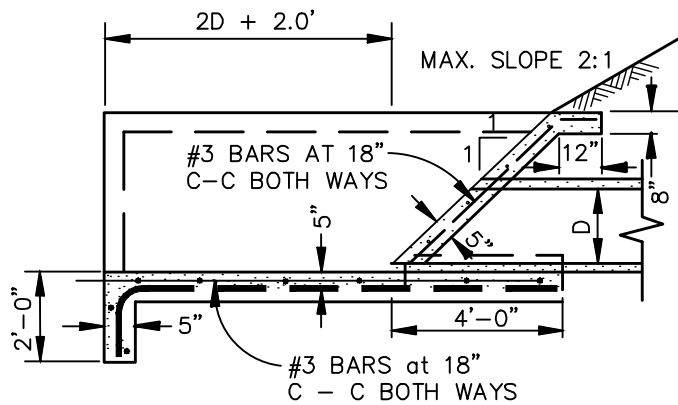
TOWN OF WESTLAKE  
1500 SOLANA BOULEVARD  
BLDG. 7, SUITE 7200  
WESTLAKE, TEXAS 76262

CONC. APRON  
VERTICAL  
HEADWALL  
WSD-12



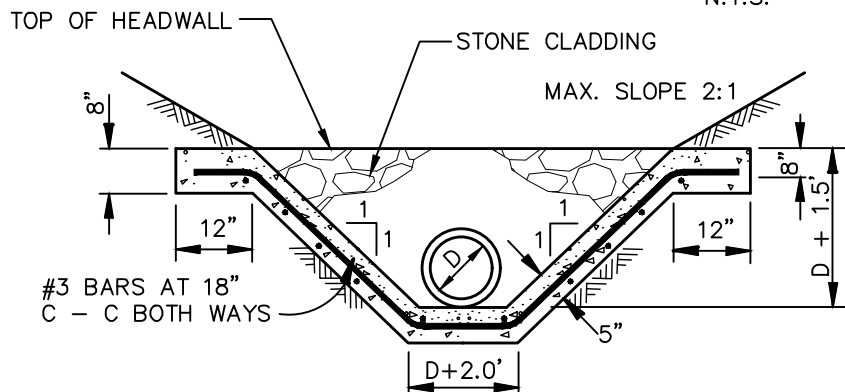
**PLAN**

N.T.S.



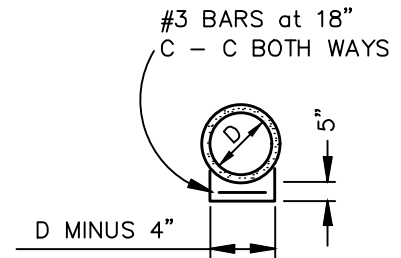
**SECTION A-A**

N.T.S.



**SECTION B-B**

N.T.S.



**SECTION C-C**

N.T.S.

**NOTE:**

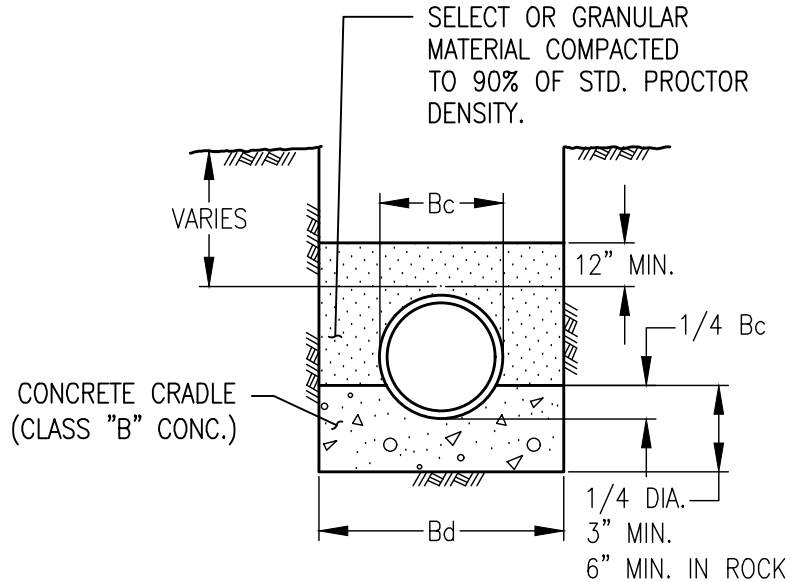
1. CONCRETE SHALL BE CLASS "A".
2. ALL EXPOSED CONCRETE SHALL BE FACED WITH STONE (COLOR TO BE DETERMINED BY THE TOWN OF WESTLAKE)

SEPTEMBER 2022



TOWN OF WESTLAKE  
1500 SOLANA BOULEVARD  
BLDG. 7, SUITE 7200  
WESTLAKE, TEXAS 76262

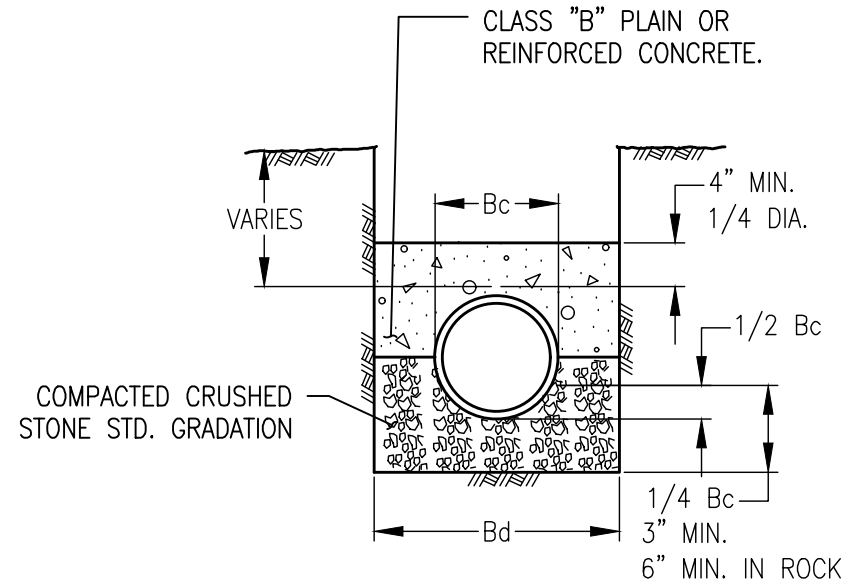
CONC. APRON  
SLOPING  
HEADWALL  
WSD-13



### CLASS "A"

CLASS "B" CONCRETE CRADLE  
PLAIN CONC. LF 2.8  
REINF. CONC. LF 3.4 P=0.4%

N.T.S.



### CLASS "A-1"

CLASS "B" CONCRETE CAP  
PLAIN CONC. LF 2.8  
REINF. CONC. LF 3.4 P=0.4%  
REINF. CONC. LF 4.8 P=1.0%

N.T.S.

#### NOTES:

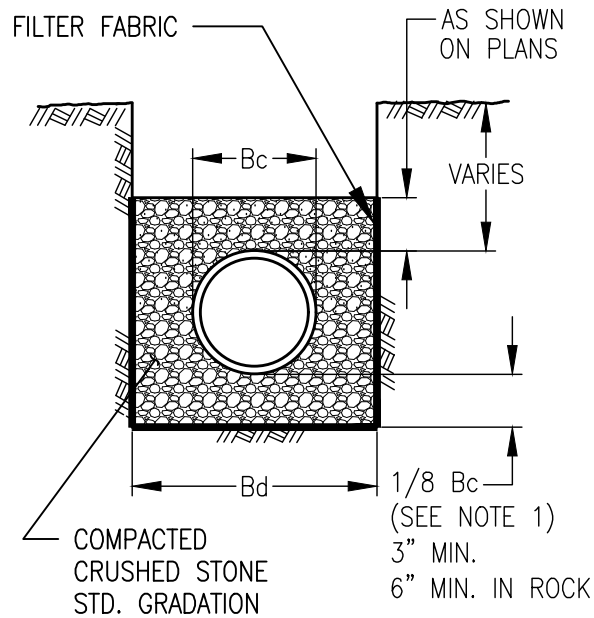
1. LF. = LOAD FACTOR TO BE USED TO DETERMINE 3 EDGE BEARING BASED ON TYPE OF EMBEDMENT.
2. FREE-FALL OF CONCRETE NOT TO EXCEED 5 FT. MAXIMUM.
3. P = Rho FOR STEEL %
4. Bc = OUTSIDE DIAMETER OF PIPE
5. Bd = TRENCH WIDTH

SEPTEMBER 2022



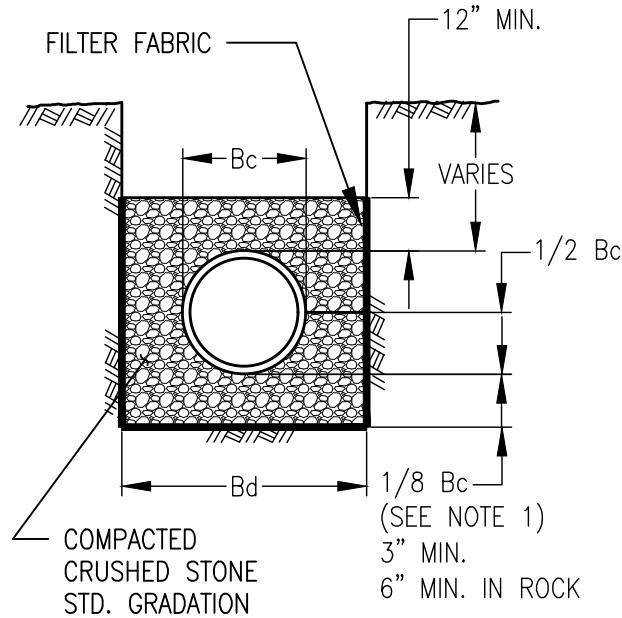
TOWN OF WESTLAKE  
1500 SOLANA BOULEVARD  
BLDG. 7, SUITE 7200  
WESTLAKE, TEXAS 76262

EMBEDMENT  
WUC-01



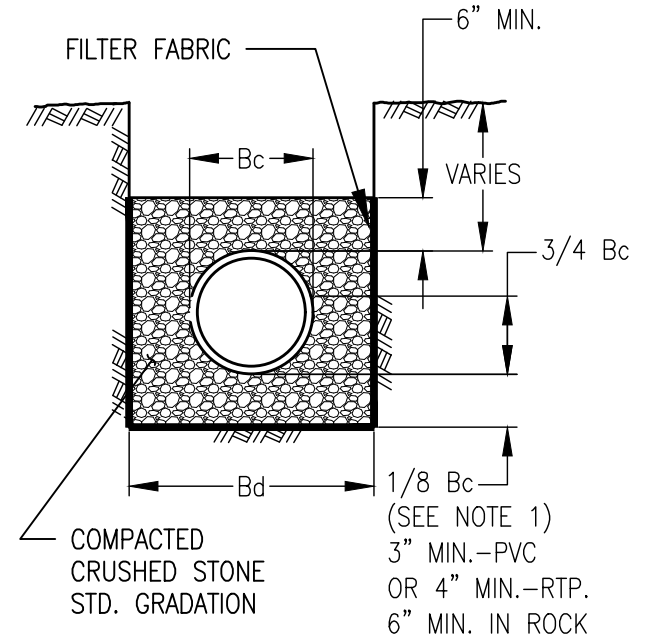
CLASS "B"

N.T.S.



CLASS "B+"

N.T.S.



CLASS "B-1"

N.T.S.

NOTES:

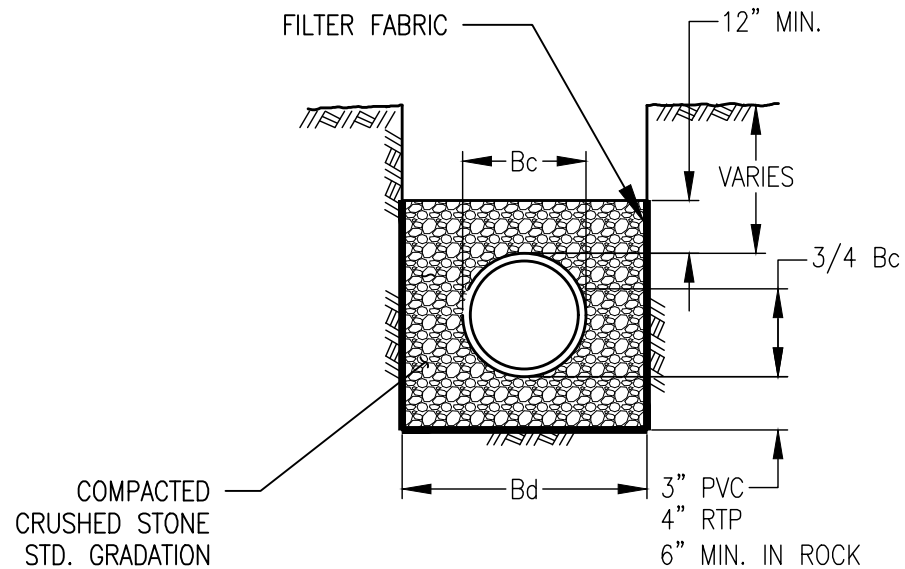
1. FOR MAINS 42" DIAMETER AND LARGER,  
1/8 Bc SHALL BE TAKEN AS 6".
2. Bc = OUTSIDE DIAMETER OF PIPE
3. Bd = TRENCH WIDTH

SEPTEMBER 2022



TOWN OF WESTLAKE  
1500 SOLANA BOULEVARD  
BLDG. 7, SUITE 7200  
WESTLAKE, TEXAS 76262

EMBEDMENT  
WUC-02



CLASS "B-2"

N.T.S.

NOTES:

1. Bc = OUTSIDE DIAMETER OF PIPE
2. Bd = TRENCH WIDTH

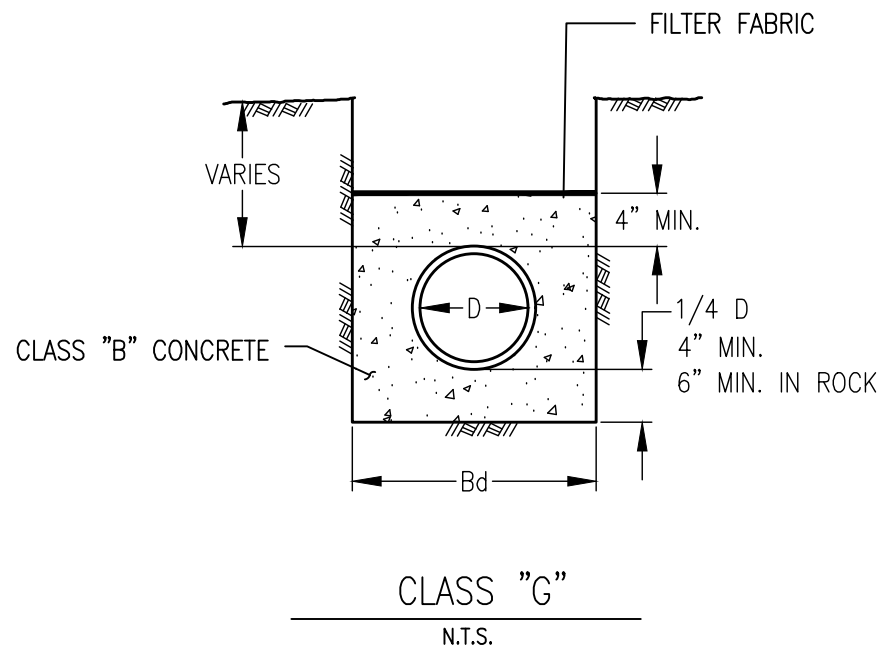
SEPTEMBER 2022



TOWN OF WESTLAKE  
1500 SOLANA BOULEVARD  
BLDG. 7, SUITE 7200  
WESTLAKE, TEXAS 76262

EMBEDMENT  
WUC-03





NOTES:

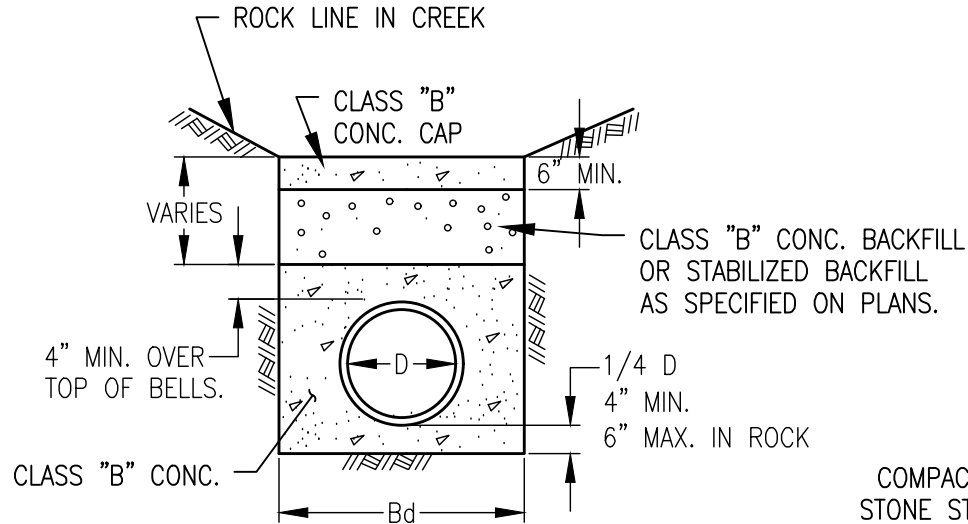
1. FOR MAINS 42" DIAMETER AND LARGER,  
1/8  $B_c$  SHALL BE TAKEN AS 6".
2.  $B_c$  = OUTSIDE DIAMETER OF PIPE
3.  $B_d$  = TRENCH WIDTH
4.  $D$  = INSIDE DIAMETER OF PIPE

SEPTEMBER 2022



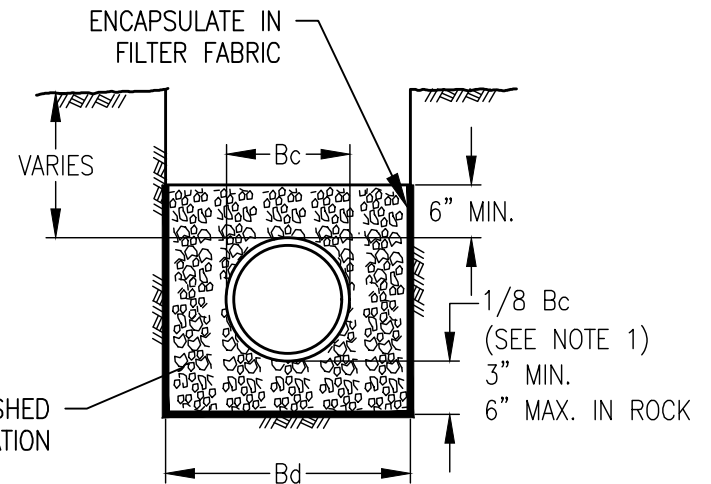
TOWN OF WESTLAKE  
1500 SOLANA BOULEVARD  
BLDG. 7, SUITE 7200  
WESTLAKE, TEXAS 76262

EMBEDMENT  
WUC-04



### CLASS "G-1"

(FOR ROCK DITCHES IN CREEKS)  
N.T.S.



### CLASS "H"

N.T.S.

#### NOTES:

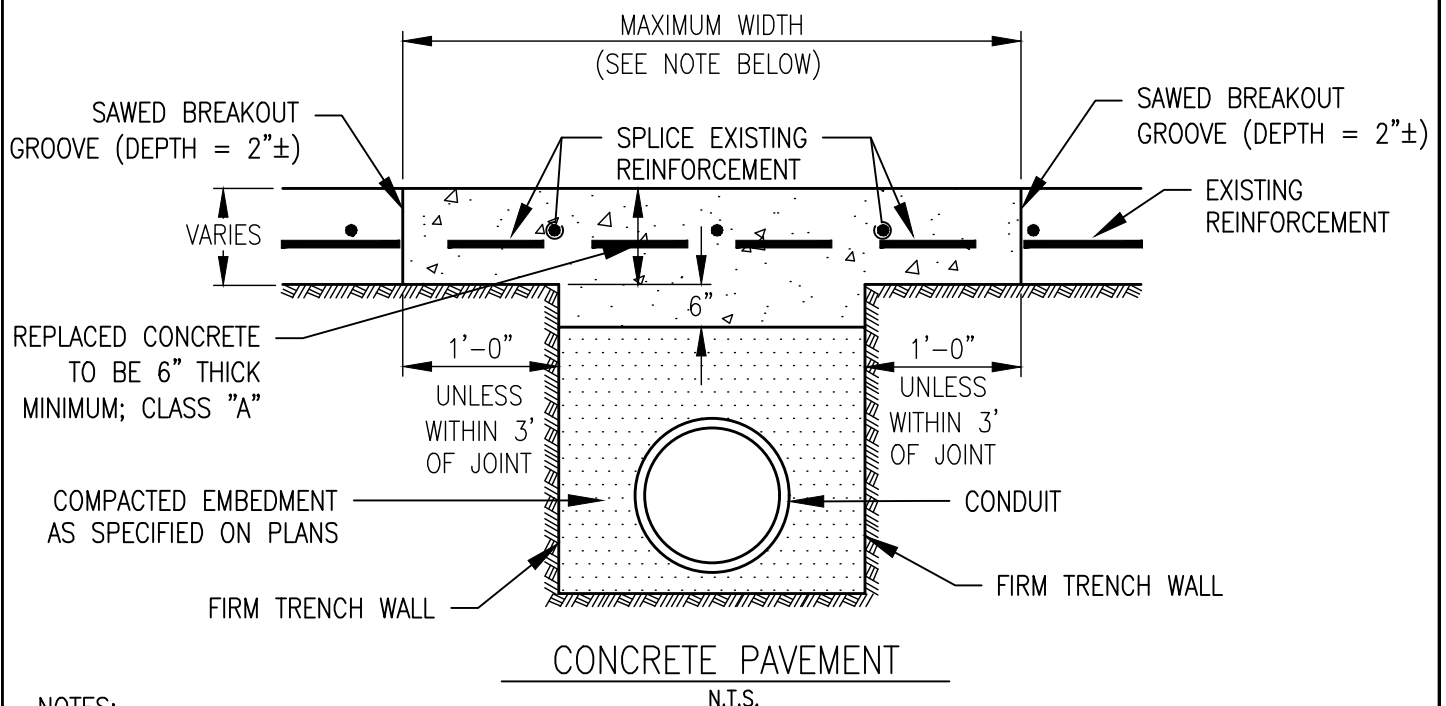
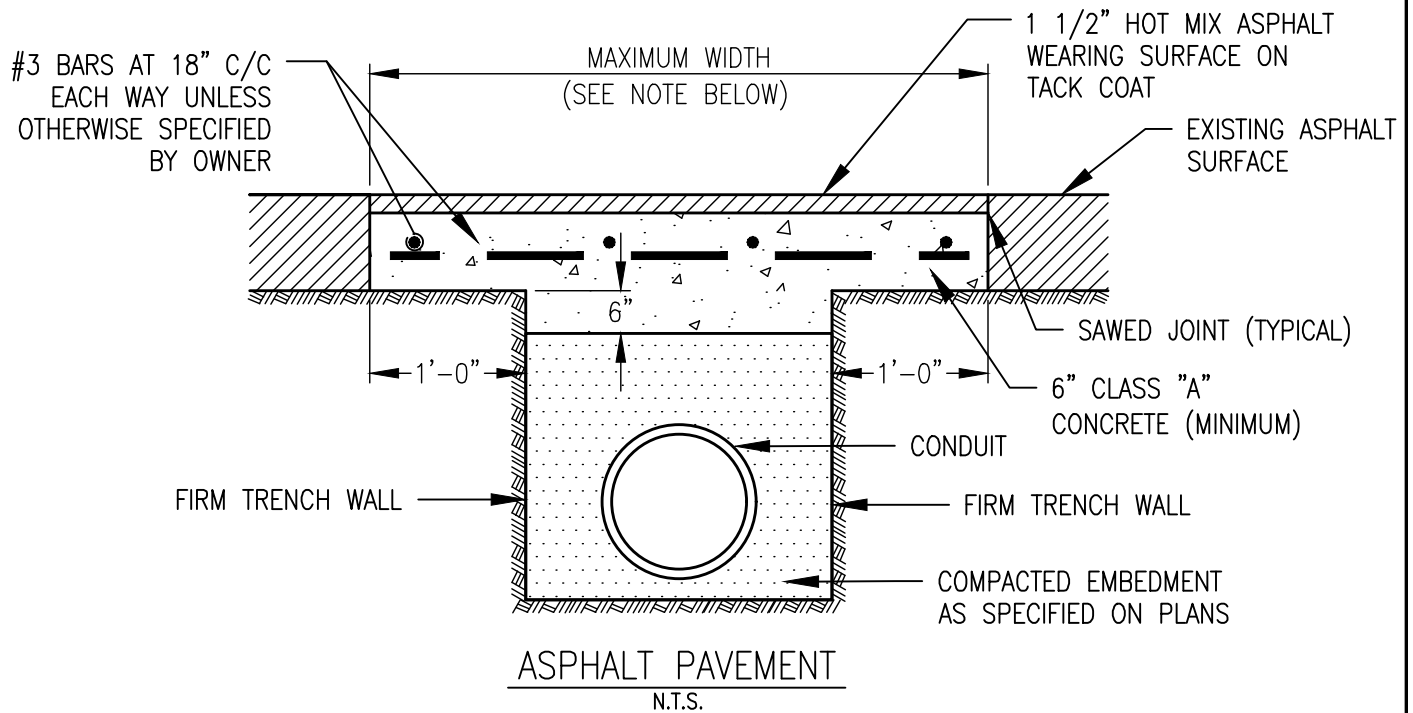
1. FOR MAINS 42" DIAMETER AND LARGER,  
1/8 Bc SHALL BE TAKEN AS 6".
2. Bc = OUTSIDE DIAMETER OF PIPE
3. Bd = TRENCH WIDTH
4. D = INSIDE DIAMETER OF PIPE

SEPTEMBER 2022



TOWN OF WESTLAKE  
1500 SOLANA BOULEVARD  
BLDG. 7, SUITE 7200  
WESTLAKE, TEXAS 76262

EMBEDMENT  
WUC-05



**NOTES:**

1. PAYMENT TO THE CONTRACTOR FOR REPLACEMENT OF PAVEMENT AND/OR DRIVEWAYS WILL BE BASED ON ACTUAL MEASUREMENTS UP TO A MAXIMUM WIDTH EQUAL TO THE SPECIFIED MAXIMUM TRENCH WIDTH (PER STD. SPEC. ITEM 6.2.) PLUS 2 FEET. ANY EXISTING PAVEMENT DAMAGED OR REMOVED IN EXCESS OF THE MAXIMUM LIMITS SHALL BE AT THE EXPENSE OF THE CONTRACTOR.
2. WHEN REMOVING CONCRETE PAVEMENT THE CONTRACTOR SHALL ENDEAVOR TO LIMIT DAMAGE TO EXISTING REINFORCEMENT SO IT MAY BE EMPLOYED IN THE REPLACEMENT OPERATION. IF ORIGINAL REINFORCEMENT IS CUT OR BROKEN, REPLACEMENT BARS OF THE SAME SIZE SHALL BE INSTALLED BY DRILLING AND DOWELING AS DIRECTED BY THE OWNER.

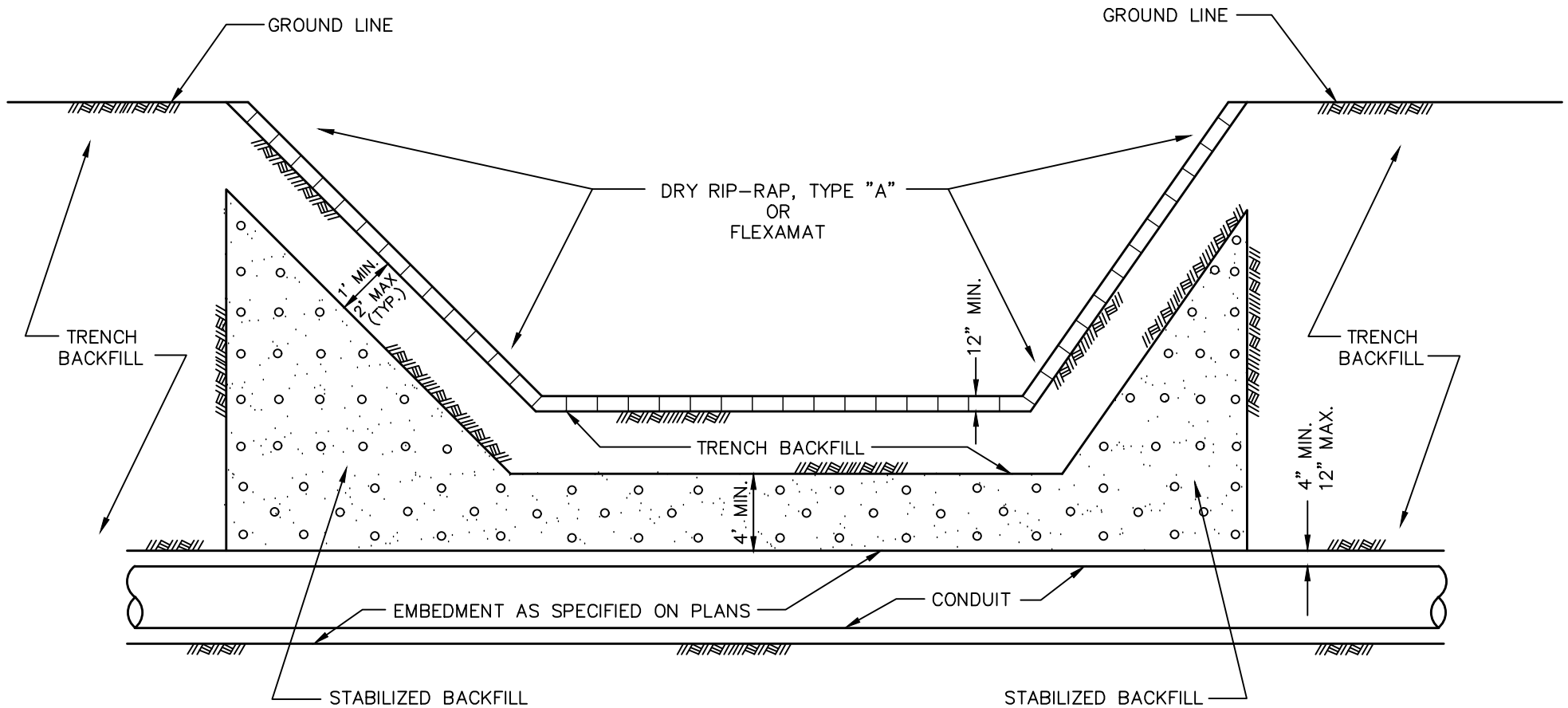
SEPTEMBER 2022



TOWN OF WESTLAKE  
1500 SOLANA BOULEVARD  
BLDG. 7, SUITE 7200  
WESTLAKE, TEXAS 76262

PAVEMENT CUT  
REMOVAL AND  
REPLACEMENT  
WUC-06

# CONDUIT UNDER CHANNEL

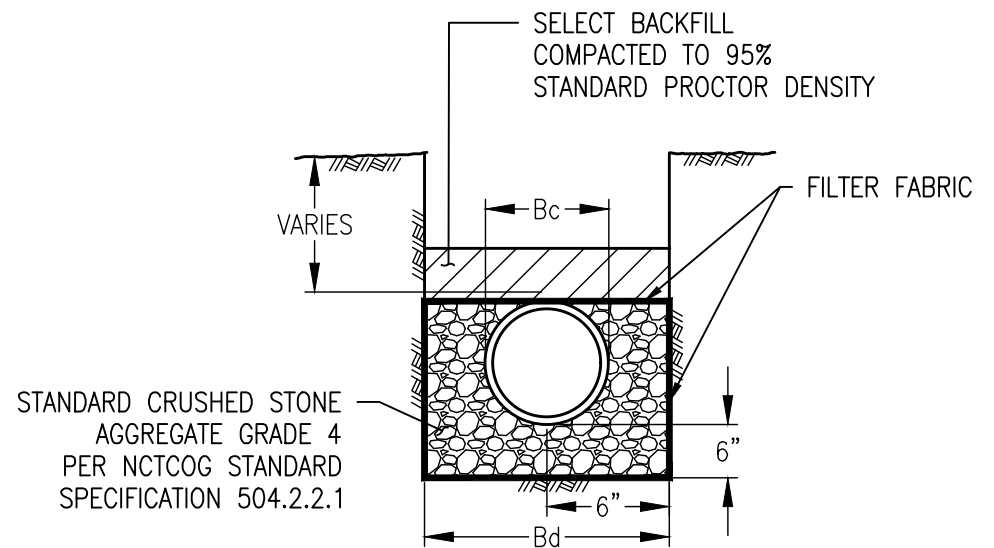
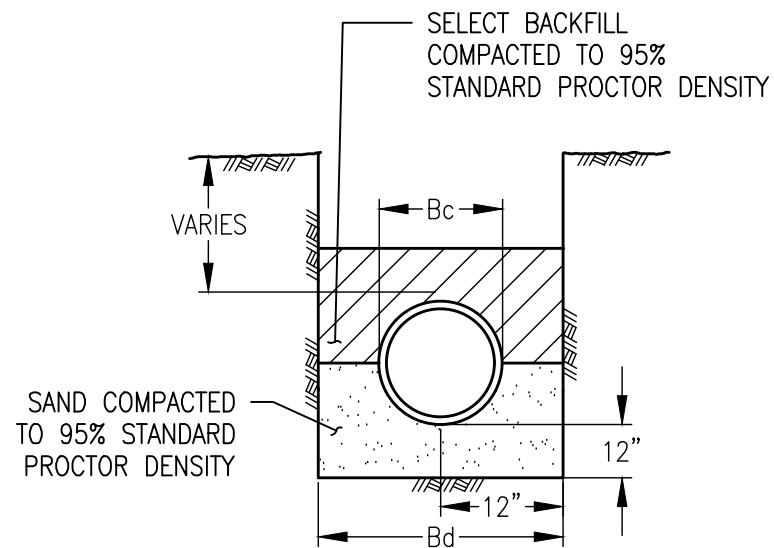


SEPTEMBER 2022



TOWN OF WESTLAKE  
1500 SOLANA BOULEVARD  
BLDG. 7, SUITE 7200  
WESTLAKE, TEXAS 76262

INFILTRATION  
PROTECTION  
WUC-07



**NOTES:**

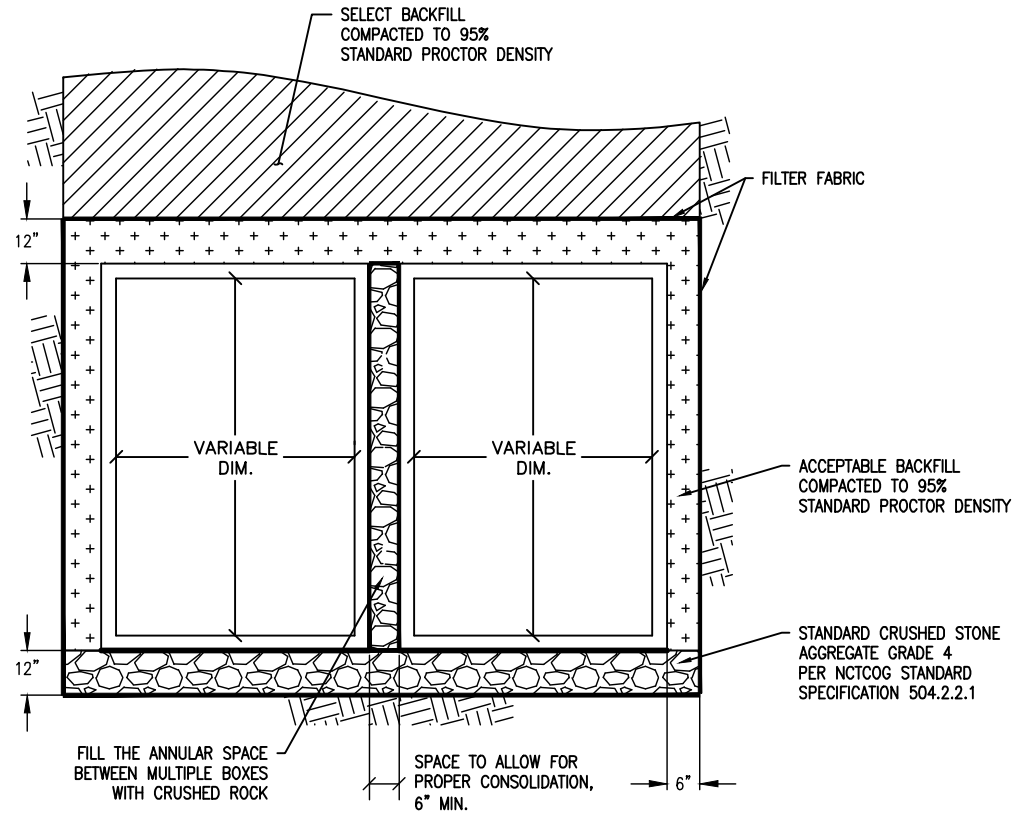
1. FREE-FALL OF CONCRETE NOT TO EXCEED 5 FT. MAXIMUM.
2.  $B_c$  = OUTSIDE DIAMETER OF PIPE
3.  $B_d$  = TRENCH WIDTH

SEPTEMBER 2022



TOWN OF WESTLAKE  
1500 SOLANA BOULEVARD  
BLDG. 7, SUITE 7200  
WESTLAKE, TEXAS 76262

RCP  
EMBEDMENT  
WUC-8



SEPTEMBER 2022



TOWN OF WESTLAKE  
1500 SOLANA BOULEVARD  
BLDG. 7, SUITE 7200  
WESTLAKE, TEXAS 76262

STRUCTURE  
EMBEDMENT  
WUC-9